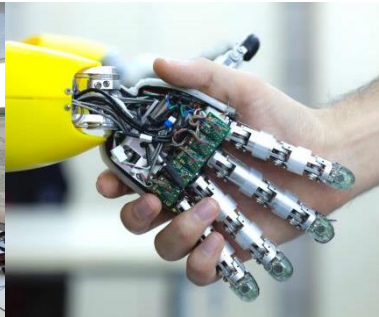




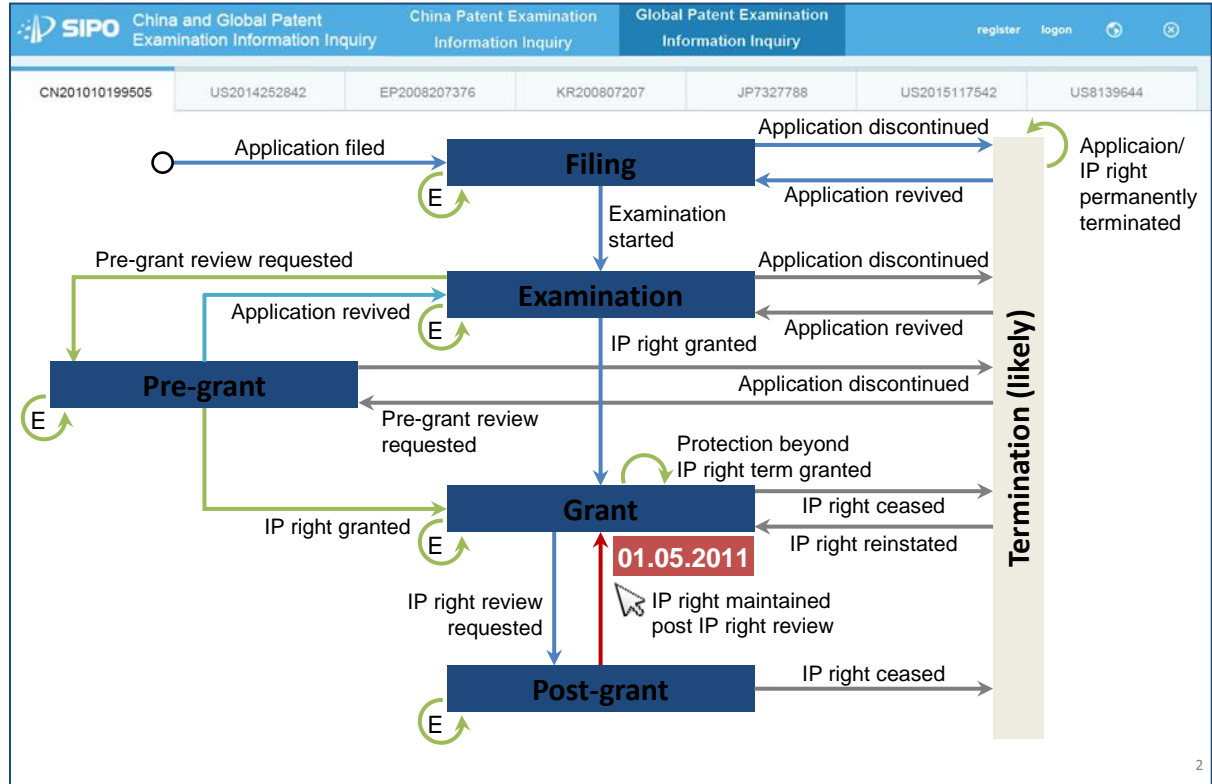
Europäisches
Patentamt
European
Patent Office
Office européen
des brevets

IP5 Global Dossier: Legal Status



SIPO Legal Status proposal, following WIPO CWS Legal Status Task Force

Simulated
Vision Scenario
of the
Patent
Prosecution
Model



EPO “IP5 family overview” as per today’s European Patent Federated Register

- Initial implementation with INPADOC Legal Status data from each IP5 Office
- Include a “deep link” to the original national register
- Data will be later standardised to new WIPO Legal Status standard
- Web services will be sequentially included from each IP5 Office, with up-to-date data

The screenshot shows the European Patent Register website. The main content area is titled "EPO Global Dossier - Federated legal status". It contains a table with the following data:

	Publication	Status	Most recent event	Event publication	RSS
CN	CN 105247513 A	Not granted	2016.02.10: Entry into substantive examination	-	
EP	EP 2962226 A1	Not granted	2016.03.09 Supplementary search report	2016.02.05	
US	US 9152669 B2	Granted	2013.04.19: Assignment	2013.07.09	

A red box highlights the 'CN' entry in the first column. A red arrow points from this box to a red box at the bottom of the page containing the text "Link to NPO Registers (primary source)". A purple box highlights the 'Status' column header.

European Patent Federated Register

- Web service provided from many EPO Member State IPOs
- Legal status data partly normalised
- Deep link available to local Registers in EPO language or English

Europäisches Patentamt
European Patent Office
Office européen des brevets

European Patent Register

Deutsch English Français
Contact

« About European Patent Register Other EPO online services Register Alert login

Smart search Advanced search Search results Help

EP2217001
European Procedure
About this file
Legal status
Federated register
Event history
Citations
Patent family
All documents

Quick help

- What is the Federated Register?
- Who is it for?
- What type of information will be displayed?
- Which countries will be providing data?
- What statuses are available in the Federated Register?
- How can I get direct access to national office registers?
- What data is provided by the national patent offices in the Federated Register?
- What does "invalidation date" mean?
- What does "not in force since" mean?
- What does "record last updated" mean?
- Why is there a difference between the "invalidation date" and the "not in force since" date?
- What are validation states?
- What are extension states?

Maintenance news

Federated register: EP2217001

Refine search ST36 Previous 10/27 Next Espacenet Submit observations Report error Print

TAP, LRM AND RESOURCE STATE CONTROL SYSTEM AND METHOD

Application No.	Publication No.	Applicant	IPC
EP07855969	EP2217001	ZTE Corporation	H04Q11/00

Only designated contracting states providing the Federated Register Service are listed below.

Legal Status data obtained using Web Services

Status	Application No.	Publication No.	Proprietor	Invalidation date	Not in force since	Renewal fees last paid	Record last updated	
AT	EP07855969	EP2217001	ZTE Corporation	---	---	---	---	
CH	EP07855969	EP2217001	ZTE Corporation	---	---	---	31.12.2015	
CZ	Patent not in force	CZ2007-855969	EP2217001	ZTE Corporation	22.04.2013	29.12.2007	---	22.04.2013
FI	Patent validated	---	2217001	ZTE Corporation	---	---	15.12.2014	23.12.2015
GR	Patent validated	EP07855969	GR3079871	ZTE Corporation	---	---	07.01.2016	07.01.2016
IE	Patent validated	EP07855969	EP2217001	ZTE Corporation	---	---	23.12.2015	29.01.2013
LU	Patent lapsed	EP07855969	EP2217001	ZTE Corporation	29.12.2012	29.12.2012	---	---
NL	Patent validated	EP07855969	EP2217001	ZTE Corporation	---	---	24.12.2015	10.03.2016
RO	No data provided by the national patent office for this patent							
SI	No data provided by the national patent office for this patent							

Responsibility for the accuracy or quality of the data displayed lies entirely with the national patent office concerned, including but not limited to the completeness and fitness of the information for specific purposes.
For complete and authoritative information, please refer to the appropriate national patent register, e.g. by clicking the relevant country code.

National patent registers

Designated contracting states AT BE BG CH CY CZ DE DK EE ES FI FR GR HU IE IS IT LI LU LV MC MT NL PL PT RO SE SK TR

Legal Status data can be obtained through deep linking

IP5 Legal Status –potential EPO next steps

- Staged, flexible implementation possible
 - standardised LS data, and web service from each IP5 Office to be implemented sequentially when available
- Prioritise “deep-linking” to local IP5 Registers in English ?
- INPADOC Legal Status available via the EPO’s Open Patent Services (OPS)
 - “IP5 Family Overview” could be implemented by each IP5 Office
- Legal status data from non-IP5 Offices may be integrated

Thank you for your attention!

www.fiveipoffices.org
ip5@epo.org